



Dear families and friends



With NAPLAN just two weeks away, students in Years 3 and 5 will soon begin practice assessments. Please regularly check your child's Seesaw page for updates on when these practice sessions will take place. These practice assessments are designed to help students get comfortable logging in and navigating the online platform. They also allow us to address any technical issues beforehand.

You can find the timetable for the NAPLAN assessments below. If your child is absent on an assessment day, they will have the chance to complete their assessment at a later date within the designated NAPLAN timeframe. If you have any questions about NAPLAN, please don't hesitate to contact me.

St Paul's NAPLAN Timetable 2025			
Week 7	Wednesday 12th March	Thursday 13th March	
	<u>WRITING</u> Year 3 9:00 - 9:40 40 mins (paper test)	<u>READING</u> Year 3 9:15 - 10:00 45 mins	
	Year 5 9:00 - 9:42 42 mins	Year 5 9:00 - 9:50 50 mins	
Week 8	Monday 17th March	Tuesday 18th March	
	<u>CONVENTIONS OF LANGUAGE</u> Year 3 9:15 - 10:00 am 45 mins	<u>NUMERACY</u> Year 3 9:15 - 10:00 pm 45 mins	
	Year 5 9:00 - 9:45 pm 45 mins	Year 5 9:00 - 9:50 pm 50 mins	

The P & F are kindly supporting the Year 3 and 5 students on NAPLAN testing days by providing them with a light breakfast.

Breakfast will be available from the tuckshop at 8:15 on the following days:

Week 7
Wednesday 12th March
Thursday 13th March

Week 8
Monday 17th March
Tuesday 18th March

We wish the students all the best on these testing days and thank the P & F for this initiative.

At St Paul's, we're committed to providing targeted teaching and learning. One of the ways we achieve this is by using data to inform and enhance our teaching practices. By analysing data, we can gain valuable insights into student progress, identify areas where additional support is needed, and tailor our instruction to meet the unique needs of each student.

Data-driven instruction allows us to set measurable goals and track student progress over time. It enables our teachers to differentiate instruction, ensuring every student is challenged and supported appropriately. With data, we can celebrate successes and address any learning gaps promptly. Currently, the Classroom Teachers are collecting and analysing reading, spelling and numeracy data to inform their teaching.

Have a great week
God bless

Nicole Anderson

Assistant Principal Curriculum



A Prayer for the Virtue of Enthusiasm: Lord, grant us the grace of enthusiasm. Help us to approach each day with joyful hearts and spirits eager to serve You and others. Fill us with the fire of Your love, that we may face our tasks with passion and inspire those around us with our zeal. In Jesus' name, we pray, Amen.

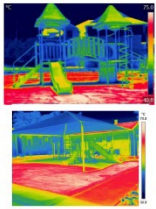
St Paul: Pray for us.

Year 3NS

In Year 3NS we have been exploring the world of poetry! We began our journey with a **poetry picnic** where students enjoyed listening to a selection of fun and engaging poems and investigating the various poetic devices. One of our favourites is Bleezer's Ice Cream, by Jack Prelutsky. He used rhyme and alliteration to create a poem about fun ice cream flavours, like 'PEACH PIMENTO PIZZA PLUM!'. Students created their own poems sparking their imagination and creativity.



Year 3L



Look at these images
What areas and materials are hotter and cooler?
Why do you think this is?

The floor is boiling hot and under the cover is cold

↑
Hotter area

In 3L we have been studying heat in science. Students explored the school grounds and playground

equipment to discover the different temperatures of surfaces in the sun and shade. We even looked at some thermal images and used a thermometer to measure and represent temperatures. Students discussed the effects of the heat of the sun on various materials and problem solved ways to help keep our play areas cooler so that everyone could enjoy them more.

Lent Starts Next Week

Lent is a period of 40 days observed by Christians, beginning on Ash Wednesday, and ending on Easter Sunday, during which **Christians practice fasting, prayer, and penance** to prepare for the resurrection of Jesus Christ. It's a time of reflection, self-discipline, and spiritual growth. On **Tuesday March 4th** we will celebrate **Shrove Tuesday**, also known as Pancake Day, this is the day before Lent begins, where Christians traditionally confess their sins and emptied their pantry, enjoying rich foods, like pancakes, as a final feast before the fasting period. We are again calling for **donations of premade pancakes** to be left at the school office to support this event. Yr 6 leaders will prepare the Pancakes and distribute them for a **gold coin donation** from 8.15am next Tuesday, all money going to CARITAS to support their work with the poor. **March 5th Ash Wednesday**, we will meet in the **Big Shed at 8.35am** for a **Lenten Prayer Assembly** and the distribution of Ashes. All are welcome to join us on this day.

Important Dates	
4 th Mar	Pancake Tuesday
5 th Mar	ASH WEDNESDAY
12 th Mar	NAPLAN starts
17 th Mar	P&F AGM 5.30pm Gracemere Hotel
4 th April	Cross Country

All are welcome
St Paul's
Catholic Primary School

ASH WEDNESDAY Prayer Assembly

Wednesday 5th March
8.35am in the Big Shed

Families are invited to purchase and donate premade pancakes.



These pancakes will be available to students at 8.15am under the Big Shed for a Gold Coin Donation.

March
4th

SHROVE TUESDAY



Pancake donations can be left at the school office up until the morning of Tuesday the 4th March.

Proceeds going to

PROJECT COMPASSION



Get your kids packing everyday lunchboxes

When children help plan and pack their own lunchbox, they are more likely to eat it.

Encourage them to swap:

- Muesli bar to wholegrain cereal bites
- Pre-packaged cheese-dip and crackers to wholegrain crackers and cheese

SWAP FROM **SWAP TO**
Cheese dip & crackers Wholegrain crackers & cheese

You're Invited

Year 7 2026 Enrolment Information Evening

We invite all intending Year 7 2026 parents to attend our Enrolment Information Evening on **Monday 3 March at 5:30pm** in the College Mercy Centre. Applications for Year 7 2026 Enrolment close on **Thursday 3 April 2025**. Visit our website to apply online.

www.fccr.com.au

A Catholic Co-educational Boarding College in the Diocese of Rockhampton

P&F Supporters Gear

St Paul's P&F want to expand family's options for supporters gear with the addition of caps for approximately \$10.

These would be mainly for adults or children to wear outside of school (they don't replace the school hat). They are seeking expression of interest for the idea for ordering purposes. Please fill in this google form.

Supporters Cap EOI



GRACEMERE STATE SCHOOL
CRICKET BLAST

ALL SCHOOLS WELCOME

REGISTER HERE:

USE CODE: 4B57E9EA FOR FREE REGISTRATION

4-WEEK CRICKET PROGRAM FOR BOYS & GIRLS
6-12 yrs
WEDNESDAYS 3:10-4:10PM
FROM FEBRUARY 26 2025
GRACEMERE STATE SCHOOL OVAL
REGO INCLUDES BLAST PACK

MORE INFO: CONTACT STACEY @ STACEY.PARFITT@QLDCRICKET.COM.AU

Walk With Us

EMMAUS COLLEGE
... LIGHT MY WAY ...

Welcome to the second edition of Walk With Us, a 3 times a term update from Emmaus College.
This is not intended as a comprehensive newsletter - our main communication to parents will still be through the College App and via email.

Emmaus College | Walk With Us | 21 February 2025

Walk With Us - Emmaus Edition 2 2025

NAPLAN

National Assessment Program - Literacy and Numeracy
Information for parents and carers

- All students in Years 3, 5, 7 and 9 in Australia do NAPLAN tests in March each year.
- NAPLAN tests students' skills in reading, writing and maths.
- The test questions are presented in Standard Australian English dialect.
- Students read some of the questions and listen to others with headphones.
- The tests will get easier or harder, depending on how students are going in the test.
- Students do four different tests. The names of the four tests are:



- Students in Year 3 will do the Writing test using pencil and paper. Year 3 students will answer the other test questions on the computer.
- Students in Years 5, 7 and 9 will answer all their test questions on computers.
- Teachers will help students get ready for NAPLAN tests.
- Schools will get their students' results. The school will then give parents/carers a report showing their own child's results.
- Parents/carers can talk to the teacher about these results.
- NAPLAN shows how students are going all over Australia. People who work in the Australian Government, state and territory education authorities and schools use NAPLAN results. The results let them see which schools are doing well and which schools might need help.

Talk to your teacher if you have any questions about your child doing the tests.
For more information on NAPLAN, visit nap.edu.au.

ST PAUL'S P&F AGM

PLEASE COME JOIN US, EVERYONE WELCOME

MONDAY 17TH MARCH
FROM 5:30 PM
Gracemere Hotel beer garden

Platters provided please
RSVP BY 13/03